



EDGES AND FRAMES

BENDS INTO L AND U SHAPES OF PROTECTION AND COVERING PANEL - 2 MM DECOCHOC*

APPLICATIONS

Provides protection for door edges and simple frames edges against frequent impact from trolleys (corridors and entrances to healthcare facilities, laboratories...).

Lateral edges are exposed to impacts from trolleys, beds... and below edges to water leaks in the door. U-bend is perfect for wet rooms such as bathrooms, sanitary arrangements, central kitchens...

DESCRIPTION

- Model: cut-to-size Decochoc* protection and covering panel with bends into L and U shapes
- Thickness: 2 mm
- Material: antibacterial and Bs2d0 fire-rated PVC, solid colour
- Surface finish: slightly textured and matte («Hydr'X» finish)
- Fixing: adhesive bonding with SPM acrylic glue or SPM MS Polymer glue (no setting time, suitable for damp rooms, patent pending).
- Colours: 39

SPECIFICATION

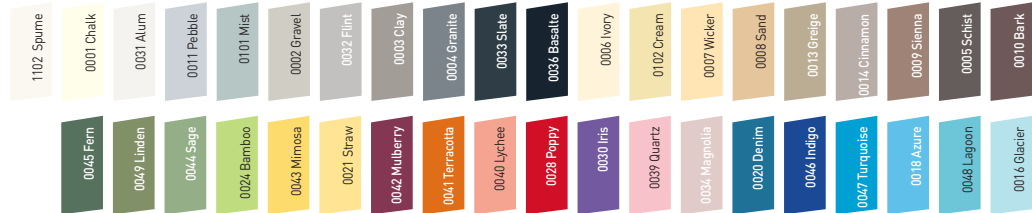
- Description: door protection and covering panel with bends into L or U for edge or frame protection (Decochoc* as manufactured by SPM) from rigid and antibacterial PVC achieving Bs2d0 reaction to fire classification, glued full surface with ad hoc glue, with solid colour and slightly textured and matte surface («Hydr'X» as manufactured by SPM), 2 mm thick.
- Environment: the product's carbon footprint must be no more than 9.5 Kg Eq. CO₂/sqm* (namely < 0.95 E+01) for 25 years of use and must be validated by an EPD. More than 20% of the product must be made from recycled material. 100% of the product must be recyclable. Its formulation must be free from heavy metals (negligible values of below 50 ppm), as well as CMR1 and CMR2. The product must meet 7 HEQ targets (France). The emission level of volatile substance in inside air must be A+ class and under 15 µg/m³ (according to ISO standard 16000-6).
** Individual EPD certification is in progress: expected 2nd half 2024.*
- Colour: selected by architects from manufacturer's standard range.
- Installation method: glue as per manufacturer's instructions (substrate, glue and installation context allowing the Bs2d0 level).



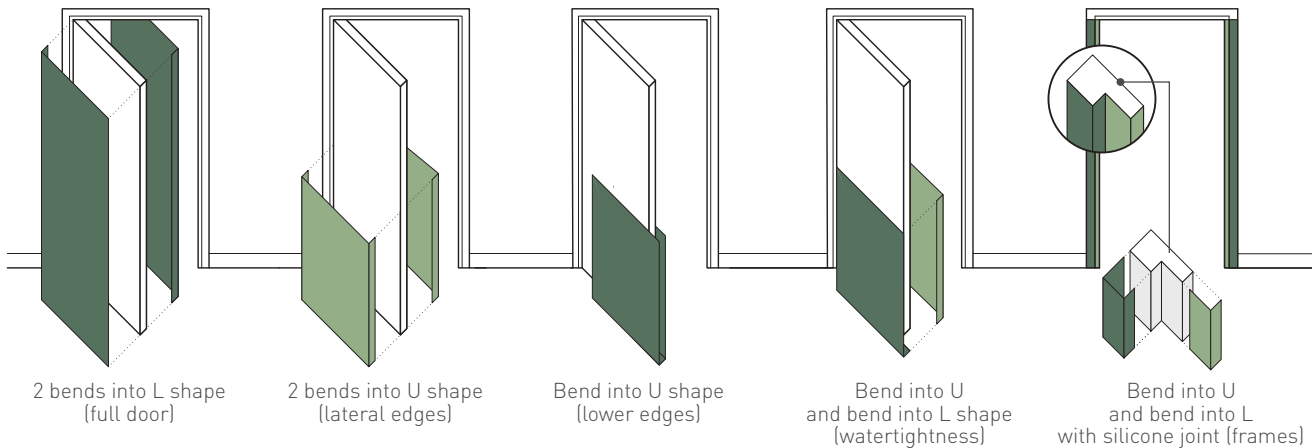
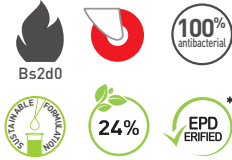
* For bend of other panels: consult us



Also available
in Decowood
or Decotrend



Colours available per product: please see the colour summary hinge



THERMOFORMING OF PROTECTION AND COVERING PANEL - 2 MM DECOCHOC*

APPLICATIONS

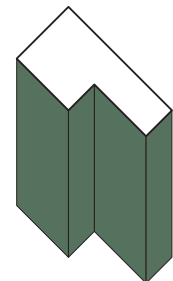
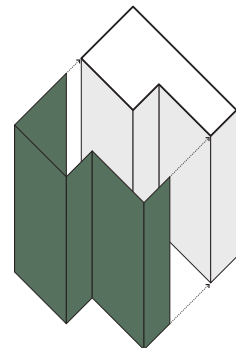
For complex door frames which cannot be protected by L or U bends (corridors in hospitals, clinics, nursing homes...).

DESCRIPTION

- Model: cut-to-size Decochoc* protection and covering panel with thermoforming according to template provided
- Thickness: 2 mm
- Material: antibacterial and Bs2d0 fire-rated PVC, solid colour
- Surface finish: slightly textured and matte («Hydr'X» finish)
- Fixing: adhesive bonding with SPM acrylic glue or SPM MS Polymer glue (no setting time, suitable for damp rooms, patent pending).
- Colours: 39

SPECIFICATION

- Description: cut-to-size and thermoformed protection and covering panel (Decochoc* as manufactured by SPM) from rigid and antibacterial PVC achieving Bs2d0 reaction to fire classification, glued full surface with ad hoc glue, with solid colour and slightly textured and matte surface («Hydr'X» as manufactured by SPM), 2 mm thick.
- Environment: the product's carbon footprint must be no more than 9.5 Kg Eq. CO₂/sqm* (namely < 0.95 E+01) for 25 years of use and must be validated by an EPD. More than 20% of the product must be made from recycled material. 100% of the product must be recyclable. Its formulation must be free from heavy metals (negligible values of below 50 ppm), as well as CMR1 and CMR2. The product must meet 7 HEQ targets (France). The emission level of volatile substance in inside air must be A+ class and under 15 µg/m³ (according to ISO standard 16000-6).
* Individual EPD certification is in progress: expected 2nd half 2024.
- The level required for biocleaning should be validated for very high infectious risk areas such as operating theatres (sector 4 according to the Pasteur Institute of Lille France). The chemical and mark resistance should have been proved on the usual cleaning products according to NF EN ISO 26987. The ease of nuclear decontamination according to DIN 25415 / ISO 8690 should be excellent.
- Colour: selected by architects from manufacturer's standard range.
- Installation sequence: glue as per manufacturer's instructions (substrate, glue and installation context allowing the Bs2d0 level).



Thermoforming
Complex frame
protection

Specifications and section drawings on our website www.spm-international.com



BimObject

BimObject in Revit and Archicad

* For thermoforming of other panels: consult us